



resolute —
— **ELEVATOR**

Elevator Modernization

Comprehensive solutions for upgrading your building's vertical transportation system

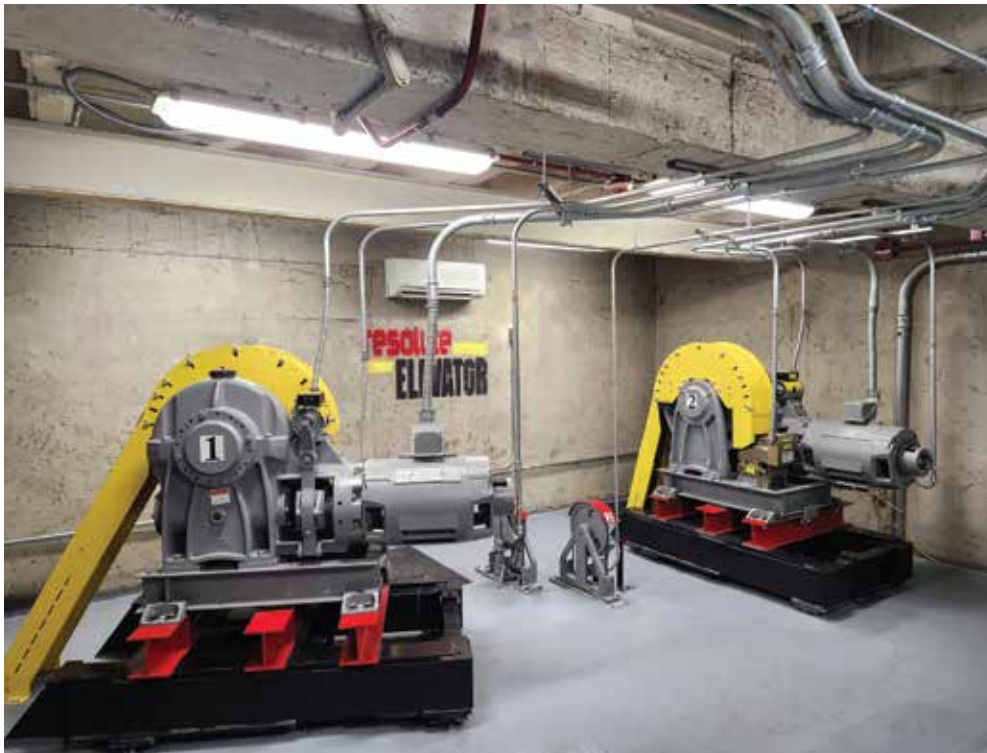


Table of Contents

1

Chapter 1

- Benefits
- Timing
- Why Resolute
- Questions

5

Chapter 2

- Supporting Tenants

6

Chapter 3

- Hydraulic Elevators
- Process

9

Chapter 4

- Traction Elevators
- Modernization Choices

11

Chapter 5

- Cab Interiors
- Our Work
- Our Expertise

A modernization is a significant undertaking that requires careful consideration. This brochure is designed to guide you through understanding the need for modernization, evaluating the appropriate solutions, and making informed decisions about upgrading your buildings largest assets.



Understanding Elevator Modernizations

A modernization is the comprehensive process of upgrading critical and cosmetic parts and components of an existing elevator system. This strategic investment improves performance, reliability, safety, and ensures compliance with current codes and technology standards. It's also an opportunity to update interior design elements to match your building's aesthetic vision.

Every elevator, regardless of make, model, capacity, or number of floors served, will eventually require an update. A well-maintained elevator typically provides 20 years or more of reliable service under normal circumstances. However, like any mechanical system, components wear out and require professional attention through a high-quality modernization.

The good news: modernization doesn't always mean replacing every component. A professional analysis weighing all possibilities and incorporating your input determines the optimal scope. After improvements, your elevator will deliver another 20+ years of dependable service with proper maintenance.

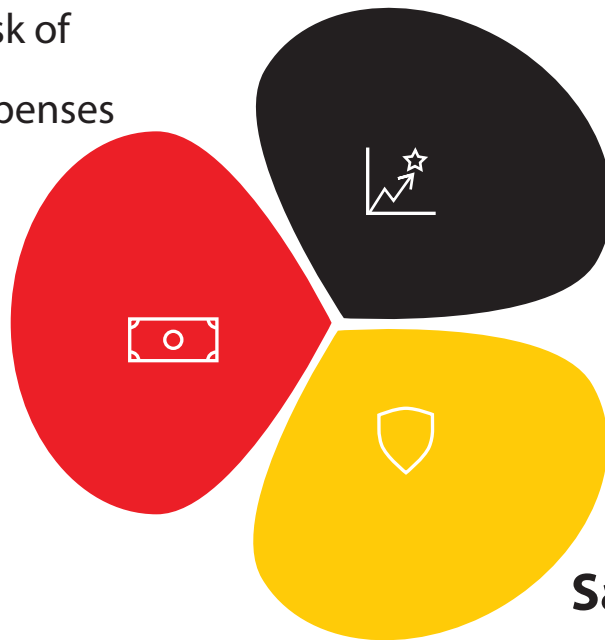
Why Modernize Your Elevator System?

Financial Benefits

- Increased property value
- Lower energy costs
- Reduces the risk of extra repair expenses

Performance Improvements

- Smoother ride quality
- Faster travel times
- Increased efficiency



Safety & Compliance

- Current code compliance
- Enhanced safety features
- Improved reliability



When Is It Time to Modernize?

Recognizing the signs that your elevator needs modernized helps you plan proactively and avoid costly emergencies. Here are the key indicators that it's time to consider upgrading your system:

Unreliable Performance

Monthly major repairs or constant adjustments indicate your elevator is struggling to maintain operation

Rising Costs

Increasing repair bills, scarce replacement parts, and ongoing wear create unsustainable expenses

Code Compliance

Outdated systems may not meet current safety and accessibility standards

Obsolete Technology

Old internal settings restrict efficiency and slow response times

Worn Appearance

Outdated aesthetics can make your building look and feel less welcoming



Why Choose Resolute Elevator

A modernization is complex, and partnering with the right company makes all the difference. Responsiveness and communication are critical for projects of this magnitude, which is why Resolute Elevator ensures our teams maintain high standards of quality and professional customer service.

Our Commitment to Excellence



Single Point of Contact

Dedicated project manager ensuring consistent communication and updates



Decades of Experience

Specialized technical expertise in elevator modernizations across departments



Analysis & Planning

Thorough evaluation before work begins with complete transparency



Quality Components

Non-proprietary parts ensuring long-term flexibility and cost savings

Our Mission: Everything we do serves one goal—providing excellent service so you can offer a safer, more efficient elevator to the riding public.



Questions about Modernization

We understand you have questions about the modernization process. While some answers require an on-site inspection, here are responses to the most frequently asked questions:

1

Why modernize at all?

For functionality, safety, performance, code compliance, and aesthetics—all addressed before work begins

2

Will we get cost breakdowns?

Absolutely—we provide complete pricing transparency based on your unit's specific needs

3

What if we don't do it?

Elevator performance may continue to decline until repaired, potentially creating safety risks and higher costs

4

Will it meet current codes?

Yes, we ensure full compliance with safety codes, fire regulations, and ADA requirements

5

Can work happen in phases?

Yes, we minimize business interruption by working with you on scheduling, including after-hours options

6

Is our elevator unsafe now?

Not necessarily—each elevator is unique, and we will address all options based on the units's specific needs

Contact us for a personalized consultation to discuss your specific questions and concerns.



Supporting Your Tenants During Modernization

When an elevator undergoes modernization, it can create an inconvenience for those who depend on it daily. Tenants and building occupants naturally worry about access, delays, and disruptions to their routines. That's why approaching the process with clear communication, thoughtful planning, and genuine consideration is essential. Keeping people informed, accommodating their needs, and demystifying the future benefits will ensure your project continues with minimal disruptions.

Communication Strategy

Transparency starts before the first tool is lifted. Inform tenants early about what's coming, why it's necessary, and expected timelines. Regular updates throughout the project keep everyone informed and reassured they're not being left in the dark.

- Post visible updates in common areas
- Send regular email communications
- Assign a point of contact for concerns
- Set realistic expectations about timelines

Practical Support

Communication alone isn't enough—tenants need practical assistance too. Those on upper floors, especially seniors or people with disabilities, may need special accommodations during the modernization period.





- Create temporary accessibility plans
- Consider portable lifts or ramps
- Assist with deliveries and services
- Keep elevator landings debris-free
- Schedule work thoughtfully to minimize impact



Our Partnership Promise: At Resolute, we help you through modernization by keeping you informed with regular updates and progress reports. Together, we ensure a successful project that respects your tenant's needs.

Modernization Process

Our comprehensive approach ensures safety, efficiency, and code compliance throughout your hydraulic & traction elevator modernization:

- **Assessment & Planning**
Complete site survey evaluating existing equipment, ride quality, performance issues, and code compliance. Determine project scope, provide budget estimates, and establish realistic timelines.
- **Permits & Code Review**
Secure all necessary permits and verify that planned upgrades meet current elevator and building codes for your jurisdiction.
- **System Upgrades**
Replace outdated controllers, upgrade hydraulic power units, modernize jack and cylinder systems, update door equipment, and refresh cab interiors and fixtures.
- **Testing & Inspection**
Comprehensive system testing to verify functionality, followed by official inspection for code compliance and safety certification.
- **Turnover & Training**
Train your team on new operating procedures and provide updated manuals, maintenance schedules, and warranty information.

Why Non-Proprietary Components Matter

- Any elevator company can service and maintain your system
- Competitive bidding for long-term maintenance contracts
- Faster parts replacement with fewer supply chain issues
- More cost-efficient with decreased lead times
- No vendor lock-in or forced annual cost increases
- Same quality as proprietary components





Hydraulic Elevator Modernizations

Consistent and prolonged use of hydraulic elevators will eventually show signs of wear that could turn into more severe issues if not addressed or repaired. Breakdowns, slow performance, and outdated controls inconvenience users while raising serious safety concerns. Older systems with buried cylinders can leak oil, creating environmental and liability issues. Components wear down, causing jerky rides, unreliable leveling, rising maintenance costs, and extended downtime due to obsolete parts.

Benefits of Hydraulic Modernization

- **Safety & Compliance** - Meet current codes and accessibility standards while eliminating leak risks
- **Performance Enhancement** - Smoother rides, better leveling, and faster door operation improve user experience
- **Energy Efficiency** - Modern equipment significantly reduces energy consumption and operating costs
- **Aesthetic Upgrade** - Refurbished cabs with updated lighting and fixtures enhance building value

Modernizing addresses these problems head-on while increasing property value. At Resolute Elevator, we're always fair and transparent about costs and project timelines.





Traction Elevator Modernization

As traction elevators age, safety quietly becomes a growing concern. Worn brake systems, aging ropes, outdated controls, and deteriorating components lead to unreliable operation, slower response times, and greater malfunction risks. Modernization brings these critical systems up to current safety expectations.

Critical Safety Upgrades

The control system upgrade represents a leap forward in technology. New microprocessor-based controllers detect faults instantly, enabling faster emergency responses and preventing dangerous failures. Brake systems are replaced or refurbished to ensure consistent, reliable stopping power under all conditions.

Hoist machines and motor drives receive comprehensive upgrades to improve speed regulation and ride control. This reduces system stress while dramatically improving passenger comfort and confidence.

Enhanced Protection

Door systems—a leading source of elevator accidents—are modernized with advanced sensors and protective edges that meet or exceed current safety standards. Additionally, new wiring, fire-service features, and emergency communication systems are installed to comply with all codes and jurisdictional requirements.

In short, traction elevator modernization isn't just about improving performance—it's about restoring confidence and ensuring your elevator is fully prepared to protect the people who ride it every day.

Making the Right Modernization Choices

Determining whether your modernization should include cosmetic upgrades, mechanical improvements, or both requires understanding the complete picture of your elevator's condition and your building's needs.

Mechanical-Only Approach

Focuses on fixing what's broken—replacing aging motors, controllers, or door operators to improve reliability and meet codes.

Cosmetic-Only Approach

Refreshes the cab's appearance without addressing aging machinery. Upgrading elevator cab interiors can improve rider's visual experience and add a cohesive look to your building aesthetic.

Comprehensive Approach

The best solution: conduct a full assessment evaluating both mechanical performance and cab condition. If equipment is nearing end-of-life or parts are scarce, mechanical upgrades are essential. If the cab looks dated or fails ADA standards, cosmetic modernization should be included.

Your Design, Your Control

This is your project, and you're in control. Your team, with our expert guidance, makes primary determinations regarding cab interiors, hall call fixtures, and indicator designs. We accommodate any laminate selection and offer various metal finishes including stainless steel. We offer flexibility so you achieve the exact look and feel you desire.



How We Help:

- We provide expert consultation to assist you with your design choices. We give you advise but you are in control.
- A full catalog of laminates is available for you to choose from. You can match the look and feel of your building.
- We provide stainless steel options and wide variety of metal finishes for you to consider.
- Our online cab configuration tool is ready for you to experiment with a variety of options.



Carolina Hotel

This historic hotel was ready for an upgrade, and the Resolute team delivered. Working closely with the hotel staff, they designed a one-of-a-kind elevator that seamlessly complements the building's historic character.

Beyond its refined appearance, the modernization included a complete system overhaul, bringing the elevator up to code while significantly improving performance and ride quality for smooth, reliable operation.



Self Help

The Self-Help Building in downtown Greensboro was in need of modernization. This ten-story facility, centrally located in the heart of the city, provides office space exclusively for nonprofit organizations.

Constructed in 1971, the building has supported decades of continuous use, including heavy daily traffic across its three main lobby elevators. Given their age and extensive utilization, a comprehensive modernization of these elevator systems was both necessary and timely to ensure continued reliability and performance.

Resolute is the Solution

To initiate the project, Resolute's team of experts collaborated closely with the building's construction team to assess conditions and recommend a comprehensive modernization plan. Once the scope and schedule were finalized, work commenced.

The modernization was carefully phased, upgrading each of the three elevators individually to ensure the building remained fully operational throughout the process. Upon completion, all units featured new cab interiors



and fully updated conveyance systems, significantly enhancing both aesthetics and performance.

This modernization represents a substantial upgrade, delivering improved reliability, efficiency, and long-term value. The system is now positioned to provide decades of dependable service, another successful project for Resolute Elevator.



Government Projects

One of the many government modernization projects completed by Resolute Elevator is the North Carolina Department of Natural and Cultural Resources Building. This project involved fully upgrading multiple elevators that had reached the end of their service life, modernizing each unit from the top of the hoistway to the bottom of the pit.

The traction elevators received new motors, updated cab interiors, and critical system enhancements to restore performance and reliability. A key focus of the project was improving efficiency, including upgrading legacy controllers to optimize operation and energy usage.

This project highlights our tailored approach to modernization. We understand that every building has unique needs, and a one-size-fits-all solution is rarely appropriate. Our team works closely with each client to define clear goals, establish realistic timelines, and deliver a customized solution that aligns with operational priorities and budget.



Resolute's Broad Spectrum of Expertise

We take pride in the modernization projects we've completed across diverse building types. From elegant historical landmarks to modern government facilities, our work demonstrates our capability to handle any elevator modernization challenge with exceptional results.

Resolute Elevator brings extensive experience to modernization projects across all industries and building types. From elegant historic landmarks to modern commercial buildings, residential complexes, government facilities, healthcare facilities, and educational institutions, we tailor our solutions to meet the unique demands of each environment. A detailed reference list of our completed projects is available upon request, showcasing our capability to deliver exceptional results in any setting.



Ready to Modernize?

Contact Resolute Elevator today for a comprehensive consultation. We'll evaluate your elevator system, discuss your goals, and create a customized modernization plan that meets your needs and budget.

Contact Information

Website: ResoluteElevator.com
Email: info@resoluteelevator.com
Phone: 919-903-0189
Address: 2309 Airpark Drive
Burlington, NC 27215

ELEVATOR
EAST
FIRST
FLOOR

IN CASE OF
FIRE DO NOT
USE ELEVATOR

1

IN CASE OF
FIRE DO NOT
USE ELEVATOR

resolute
ELEVATOR

Department of Natural and Cultural Resources
Raleigh, NC

resolute ELEVATOR

Resolute Elevator System

The Innovation - High Quality Elevator Solution

For more information go to ResoluteElevator.com

Email: info@resoluteelevator.com

Phone: 919-903-0189

Address: 2309 Airpark Dr,
Burlington, NC 27215

