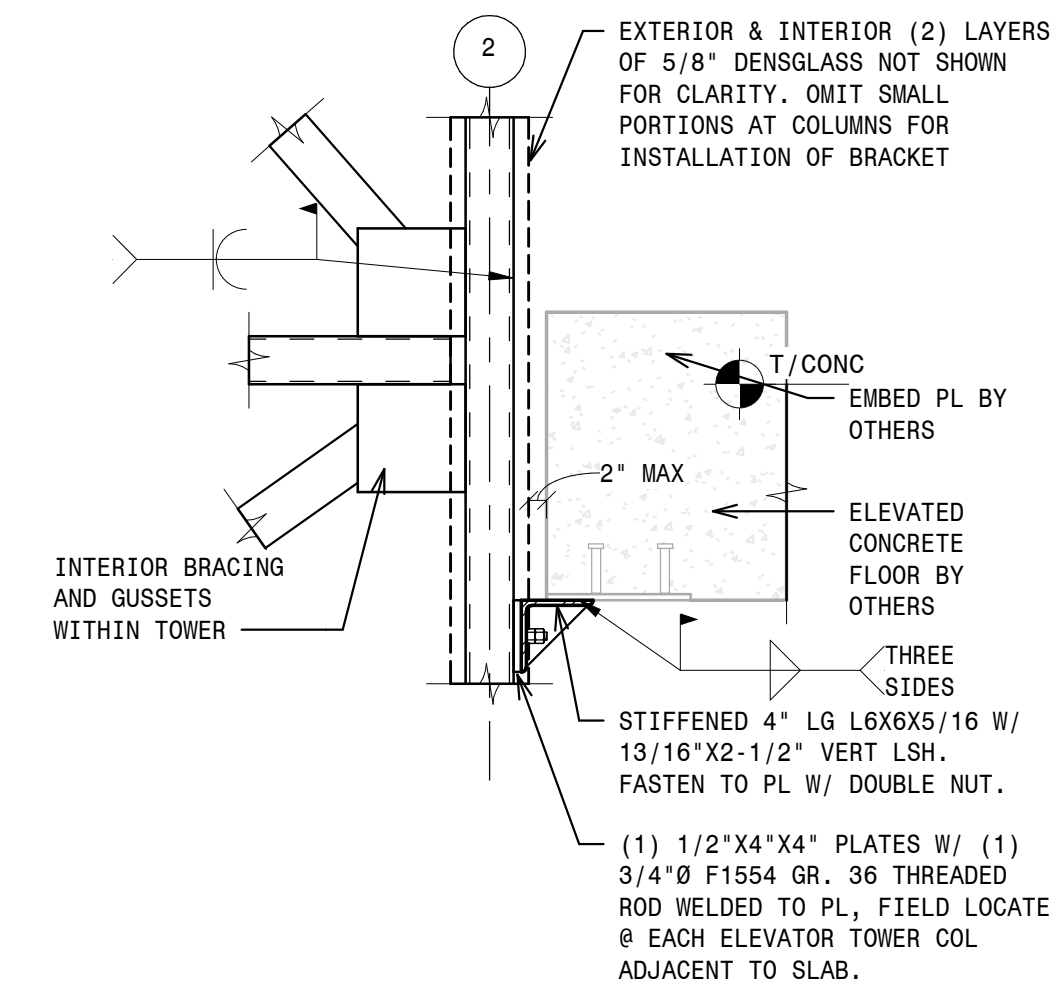
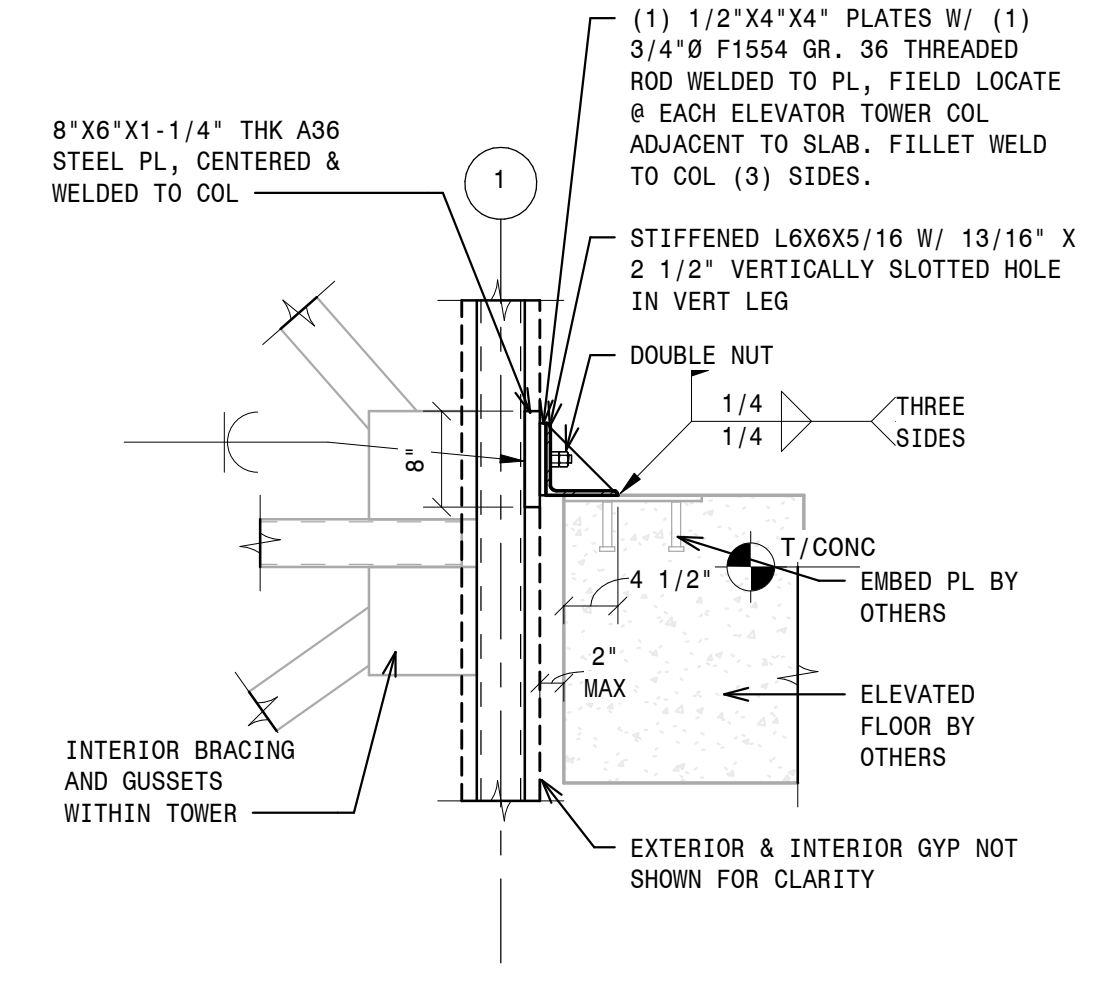


LATERAL CONNECTION NOTES:

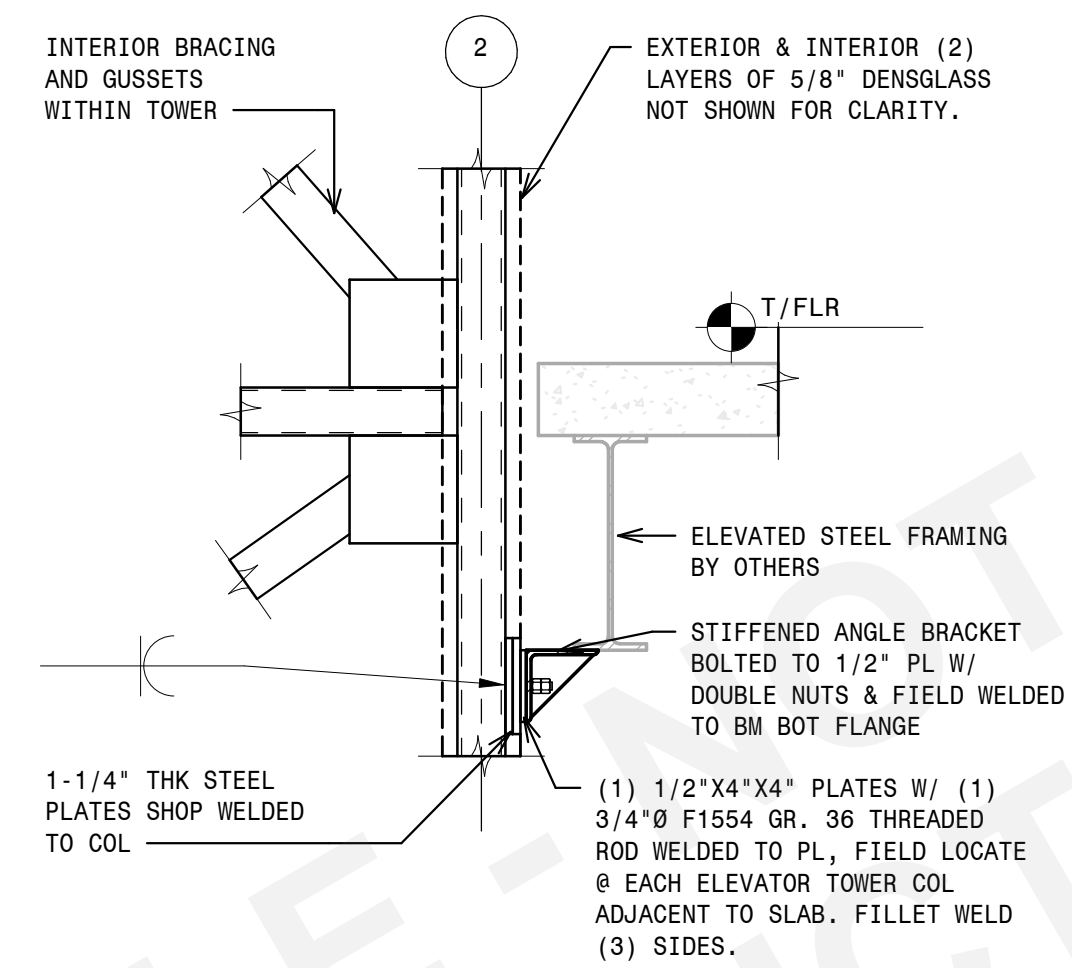
- CONNECTION DETAILS SHOWN ON THIS PAGE ARE EXAMPLES OF TYPICAL LATERAL RESTRAINT CONNECTION DESIGNS OFFERED BY RESOLUTE ELEVATOR. THESE CONNECTIONS ARE DESIGNED TO RESIST LATERAL LOADS APPLIED BY THE ELEVATOR TOWER ONLY.
- CONNECTION DESIGNS MAY VARY FROM A SHOWN AND WILL BE COORDINATED WITH THE CLIENT DURING DESIGN.
- REQUIREMENTS FOR LATERAL CONNECTIONS ARE DETERMINED ON A PROJECT-BY-PROJECT BASIS, DEPENDENT UPON TOWER HEIGHT, SITE CONDITIONS, AND PREVALENT ENVIRONMENT CONDITIONS. MANY LOW-RISE CONFIGURATIONS ARE ABLE TO BE INSTALLED AS FREE-STANDING TOWERS WITHOUT LATERAL RESTRAINT.



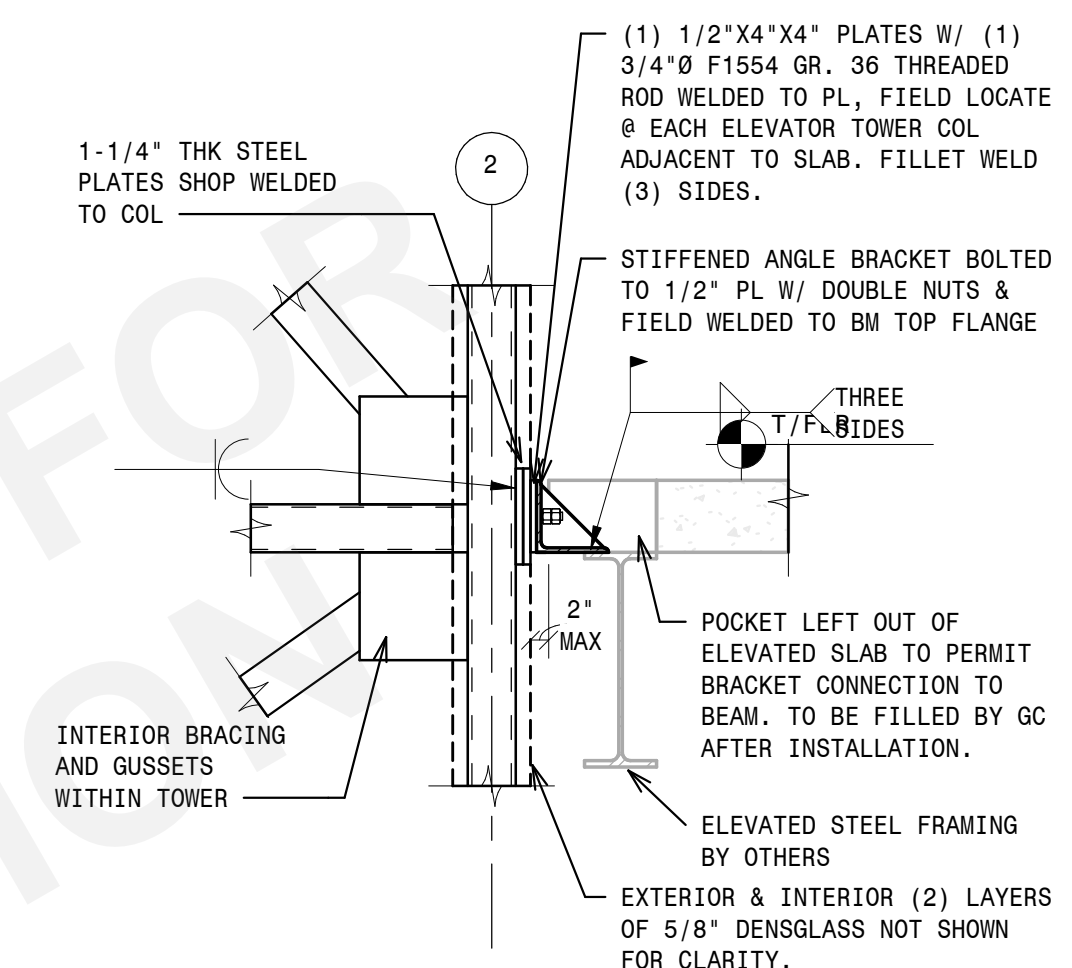
2 - FLOOR CONNECTION - CONCRETE OPTION 2
3/4" = 1'-0"



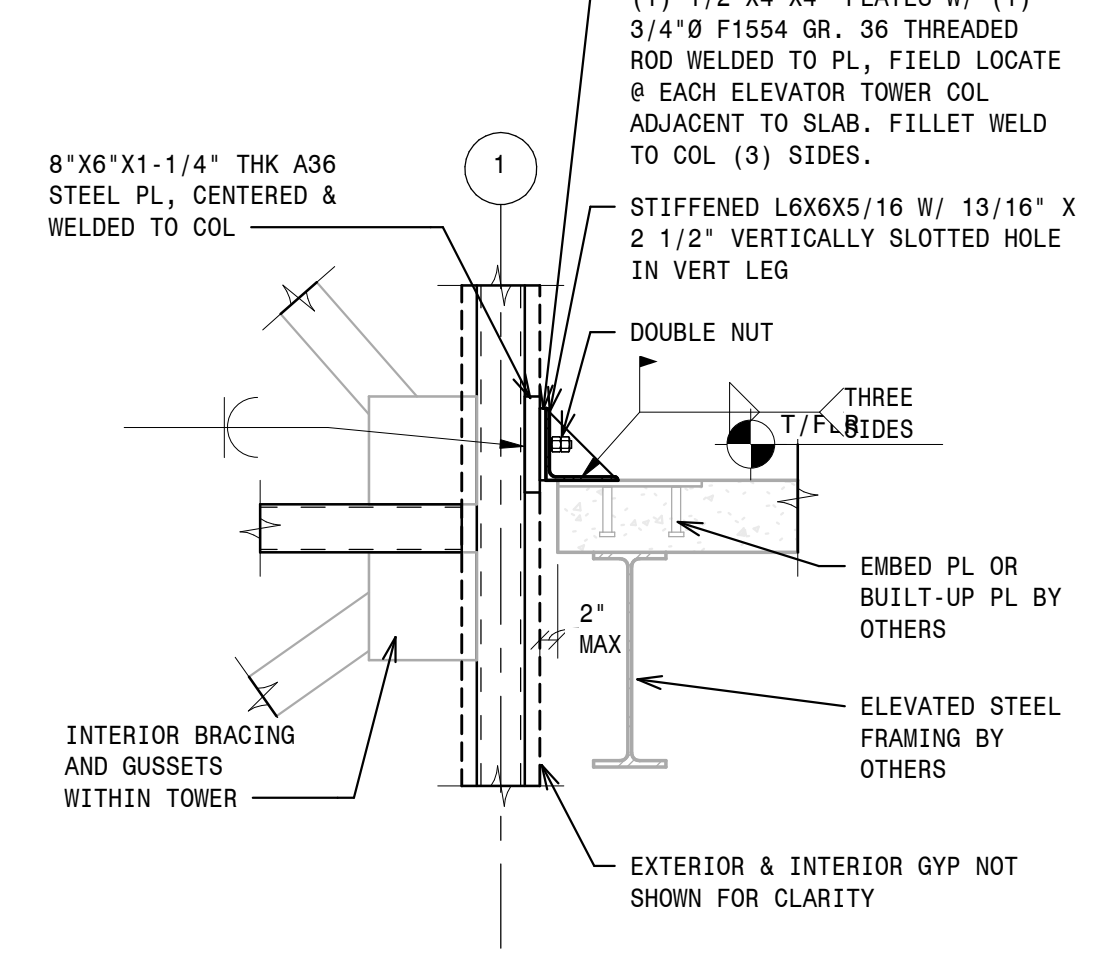
1 - FLOOR CONNECTION - CONCRETE OPTION 1
3/4" = 1'-0"



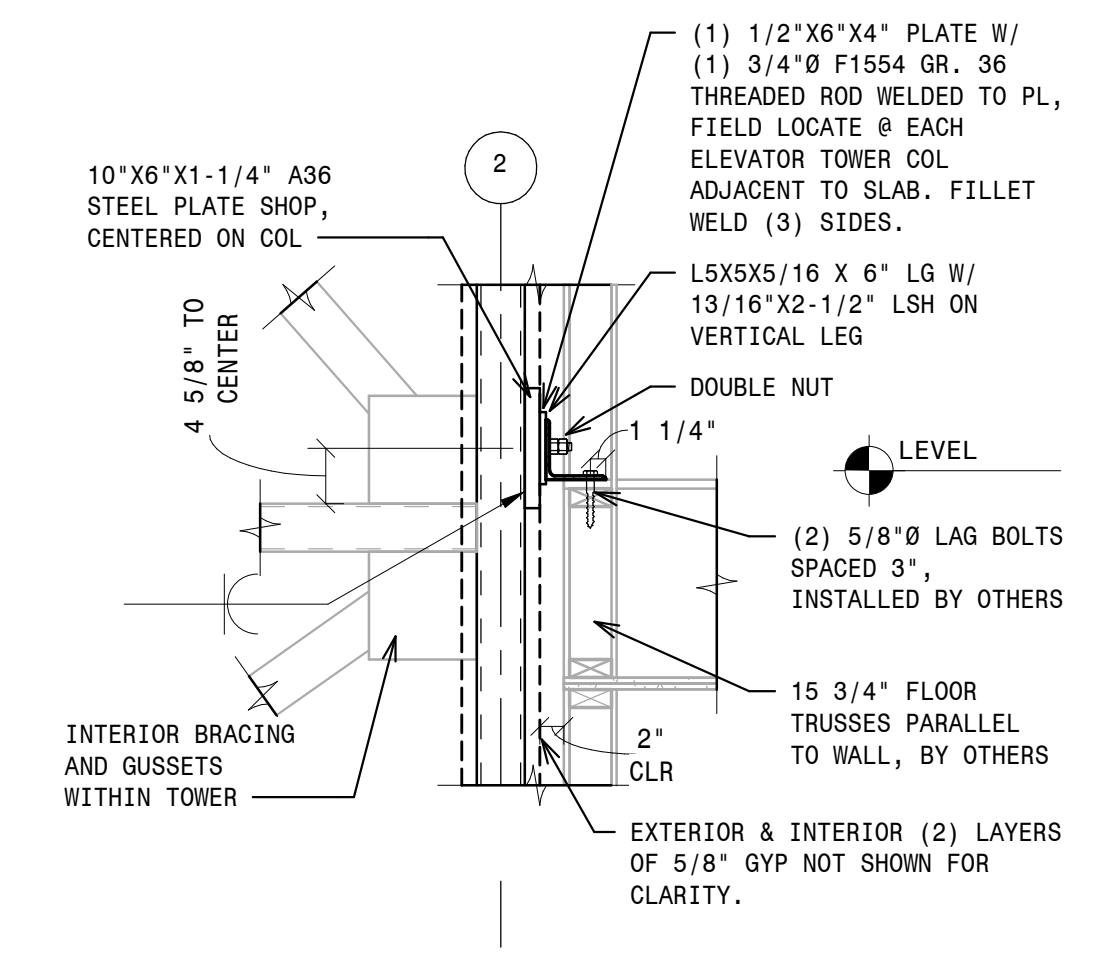
5 - FLOOR CONNECTION - STEEL - OPTION 3
3/4" = 1'-0"



4 - FLOOR CONNECTION - STEEL - OPTION 2
3/4" = 1'-0"



3 - FLOOR CONNECTION - STEEL OPTION 1
3/4" = 1'-0"



6 - FLOOR CONNECTION - WOOD
3/4" = 1'-0"

REVISIONS

NOT FOR CONSTRUCTION

DES. BY:	CHKD. BY:	PROJECT NO.
DWN. BY:		
DATE:	4/15/2006	
SCALE:	3/4" = 1'-0"	
PROJECT ID #:		

SEAL

RESOLUTE ELEVATOR

LATERAL CONNECTION EXAMPLES



2309 AIRPARK DR.,
BURLINGTON, NC 27215
PHONE: (919)-903-0189
FAX: (336)-232-9789
Info@resoluteelevator.com
www.ResoluteElevator.com
NC Firm No. D-0476