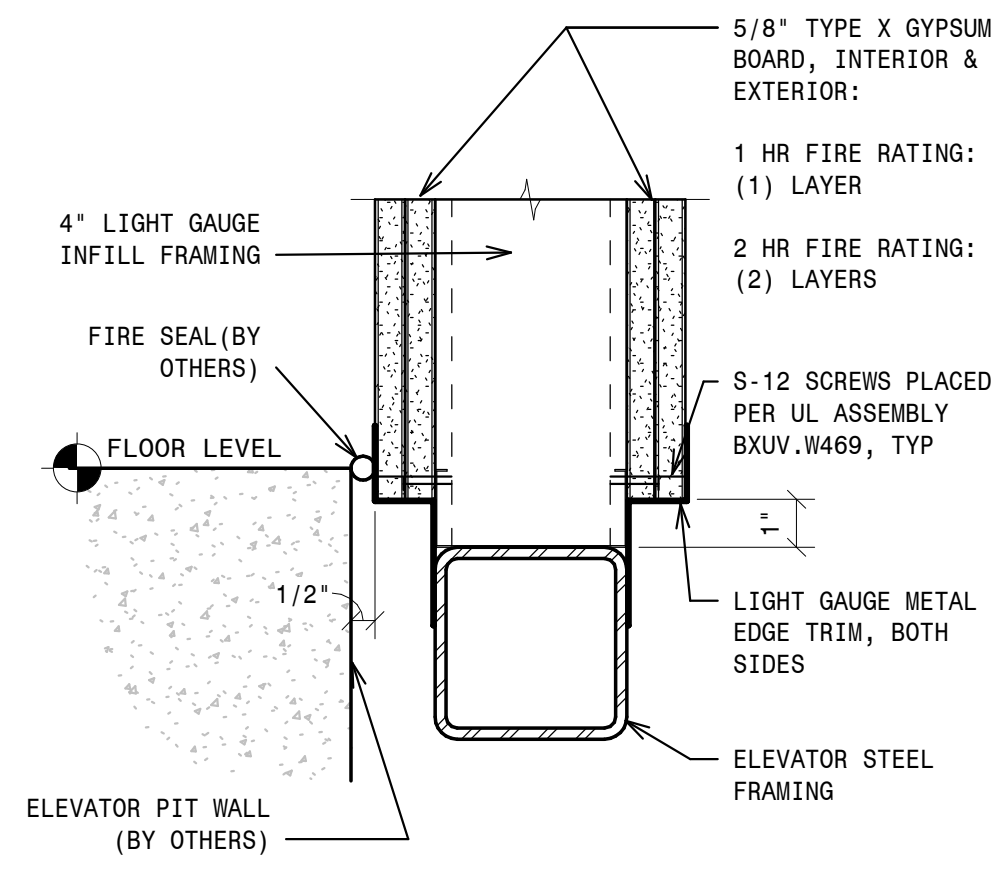
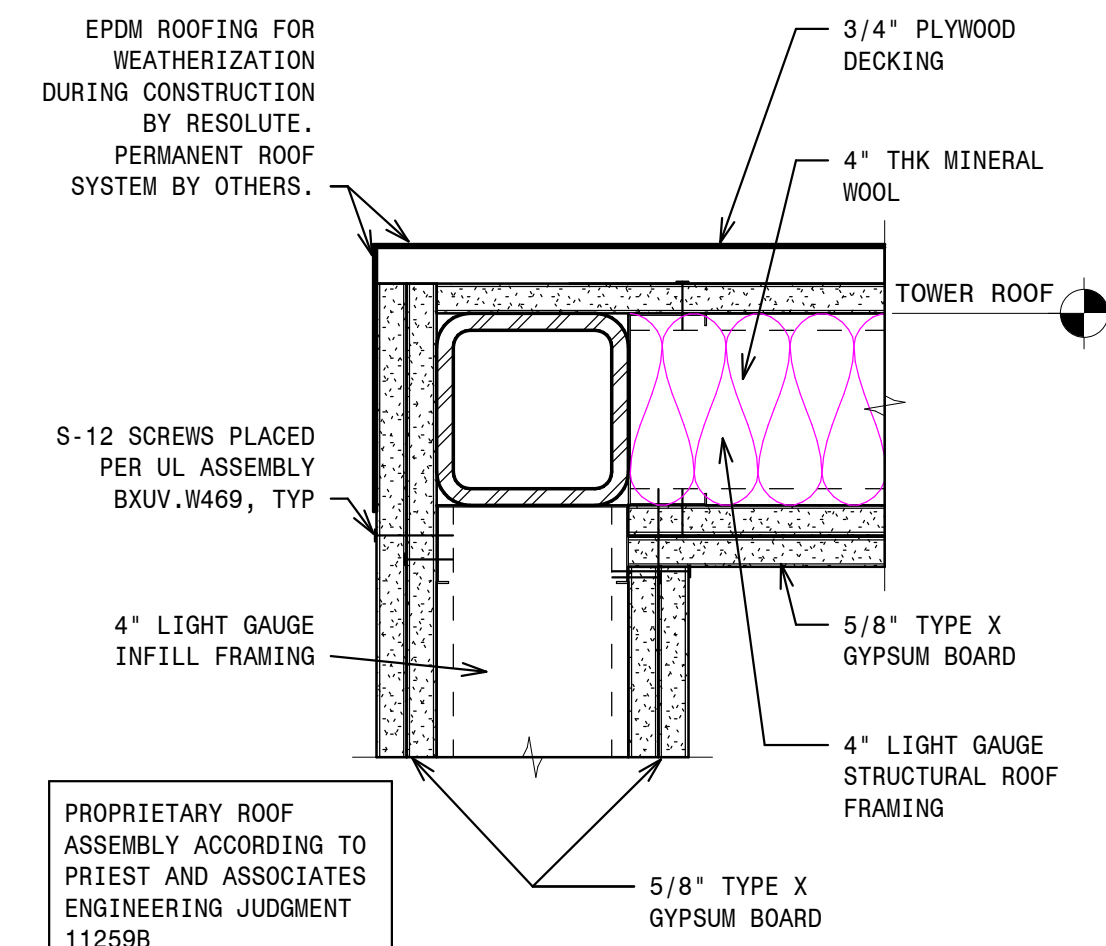


- 4 - ELEVATOR HOISTWAY CORNER DETAIL - PLAN VIEW  
NOT TO SCALE

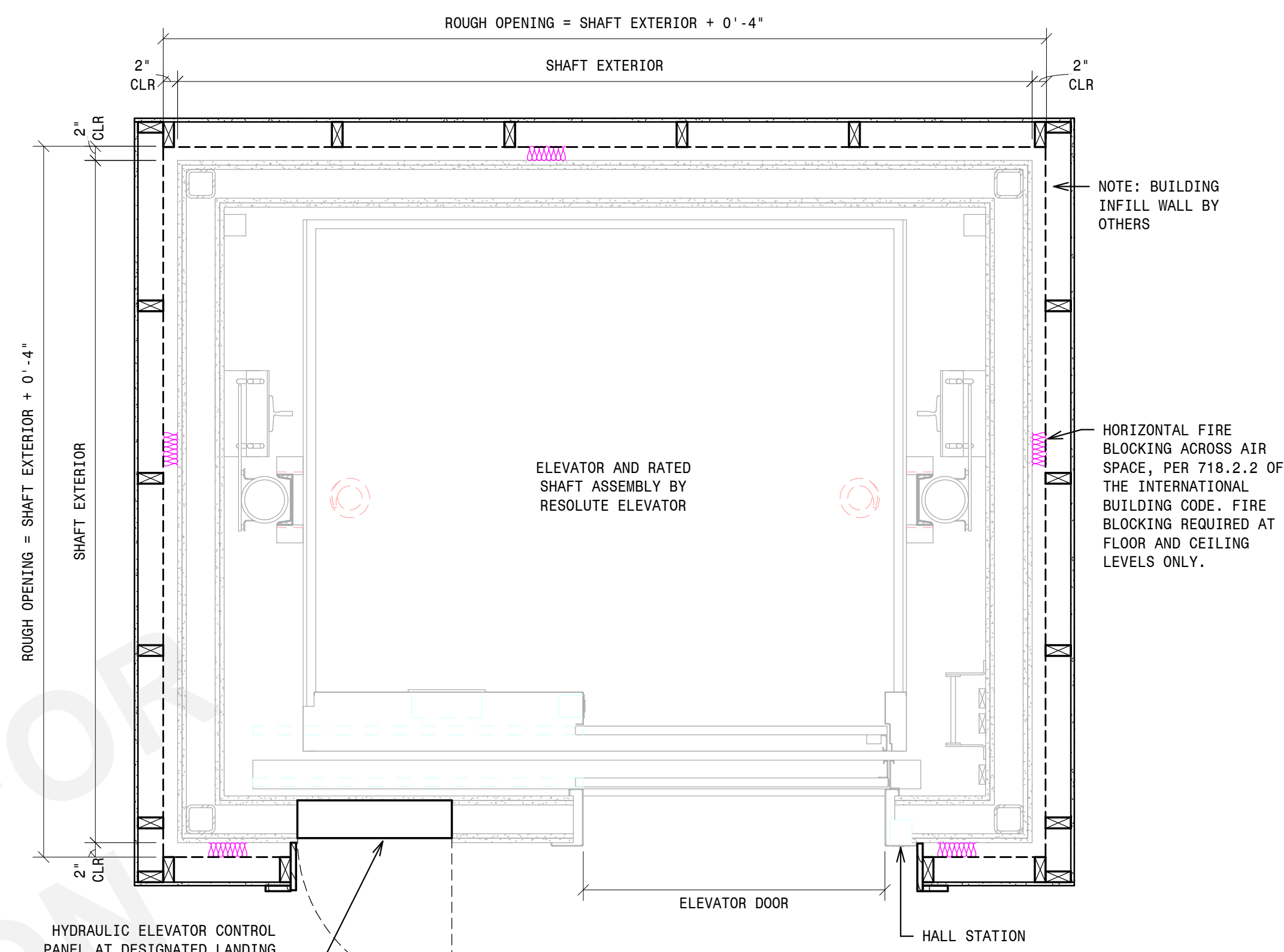


- 3 - ELEVATOR HOISTWAY PIT/WALL DETAIL  
NOT TO SCALE

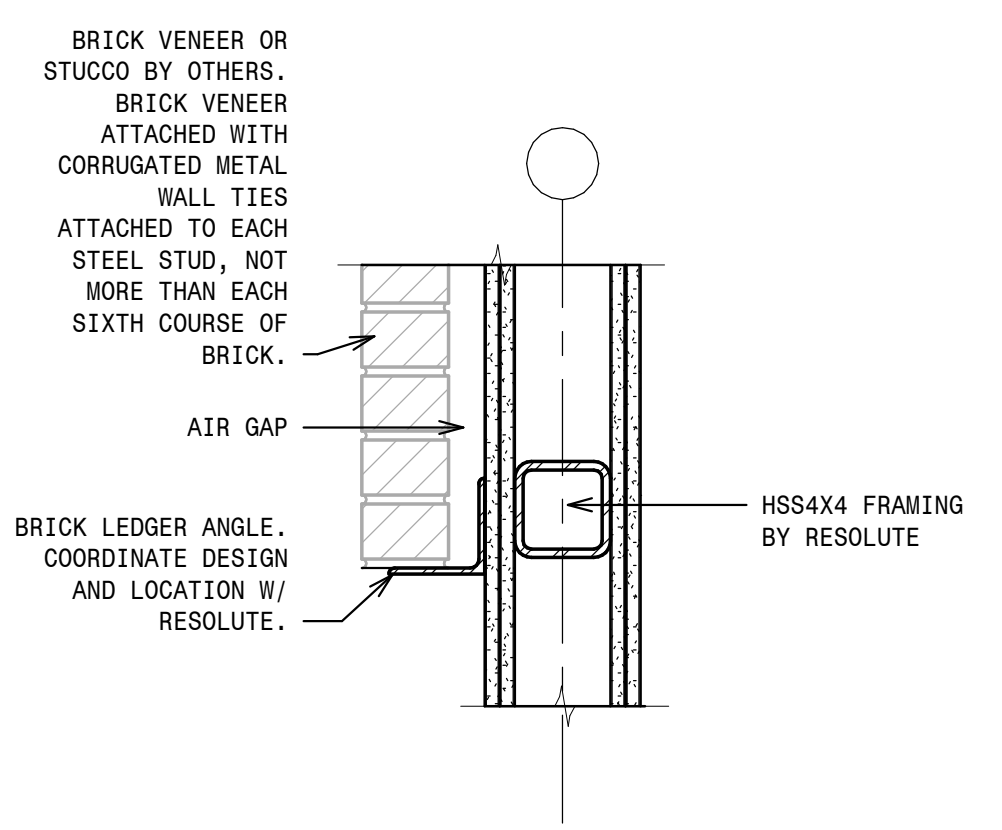


- 2 - ELEVATOR HOISTWAY ROOF DETAIL  
NOT TO SCALE

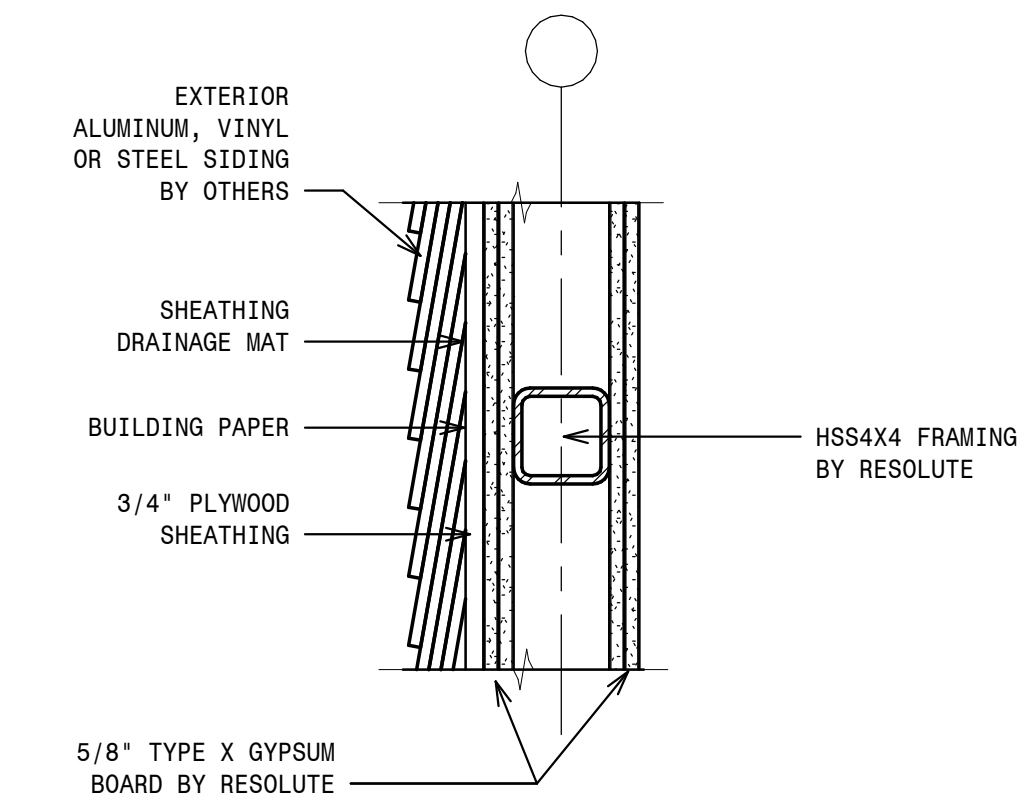
NOTES:  
 RESOLUTE ELEVATOR SHAFT ASSEMBLY IS FIRE RATED PER PROJECT REQUIREMENTS AND REPLACES TRADITIONAL SHAFT CONSTRUCTION (CMU, SHAFT WALL, ETC.).  
 ADDITIONAL PARTITION/PARTY WALLS MAY BE DESIGNED AND INSTALLED BY OTHERS, BUT ARE NOT REQUIRED TO MAINTAIN SHAFT RATING.  
 BUILDING WALLS MAY BE ERRECTED BEFORE OR AFTER TOWER INSTALLATION. FINAL LAYOUT AND SEQUENCING TO BE COORDINATED WITH RESOLUTE ELEVATOR.



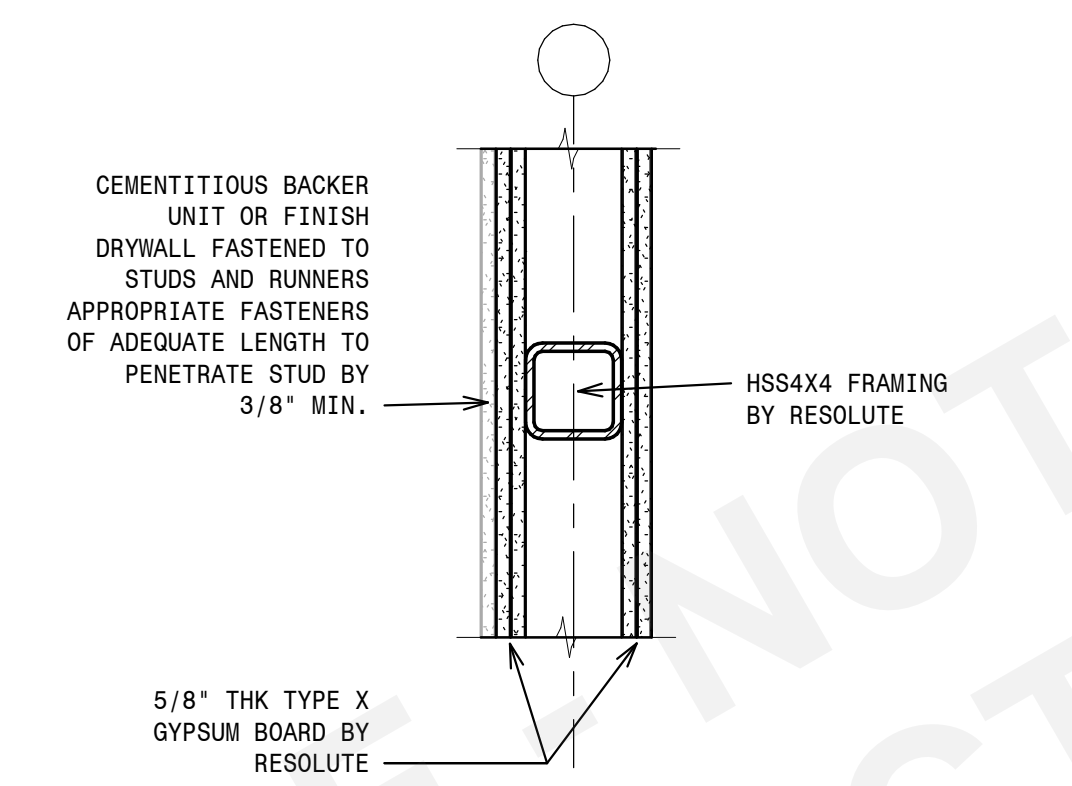
- 1 - ENLARGED ELEVATOR PLAN  
NOT TO SCALE



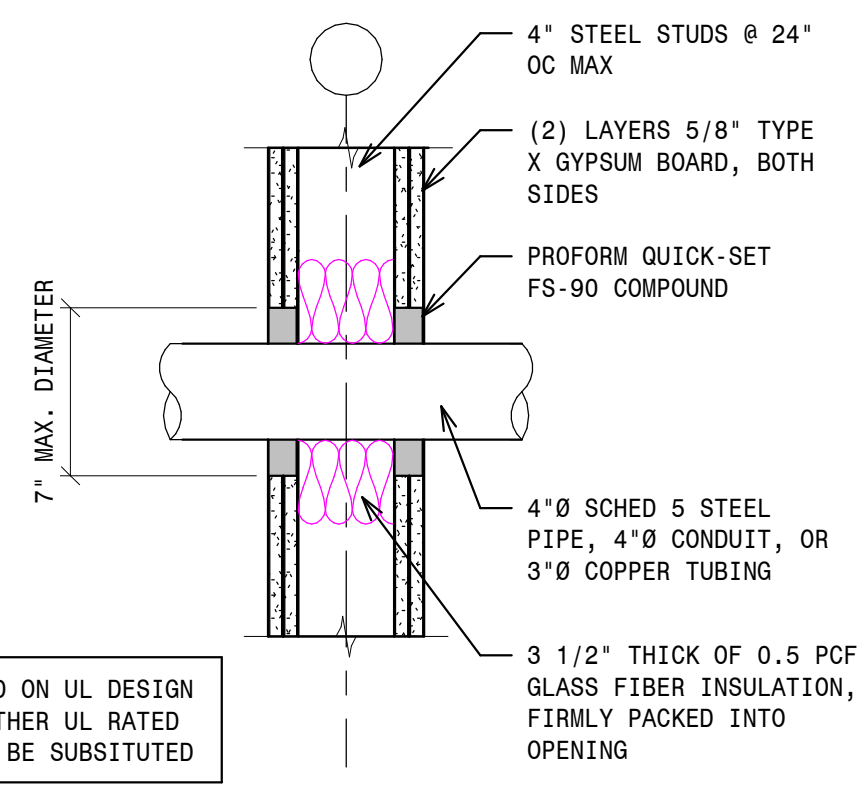
- 7 - SECTION - BRICK VENEER DETAIL  
1 1/2" = 1'-0"



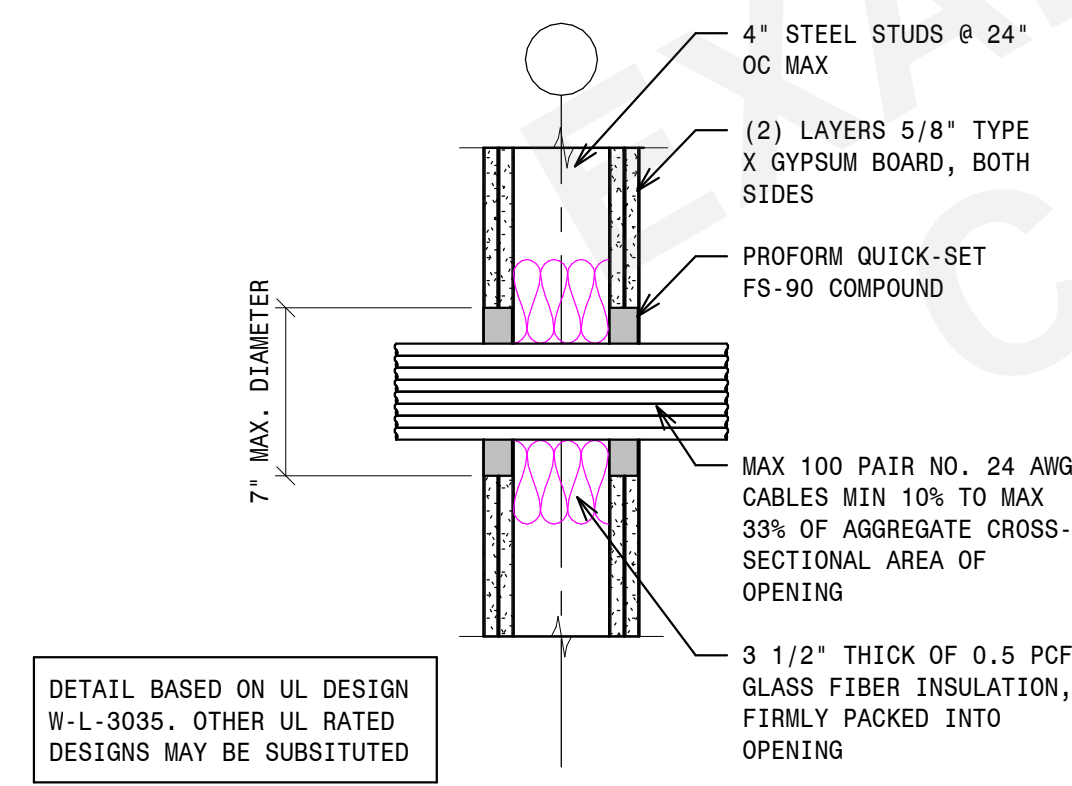
- 6 - SECTION - VINYL SIDING DETAIL  
1 1/2" = 1'-0"



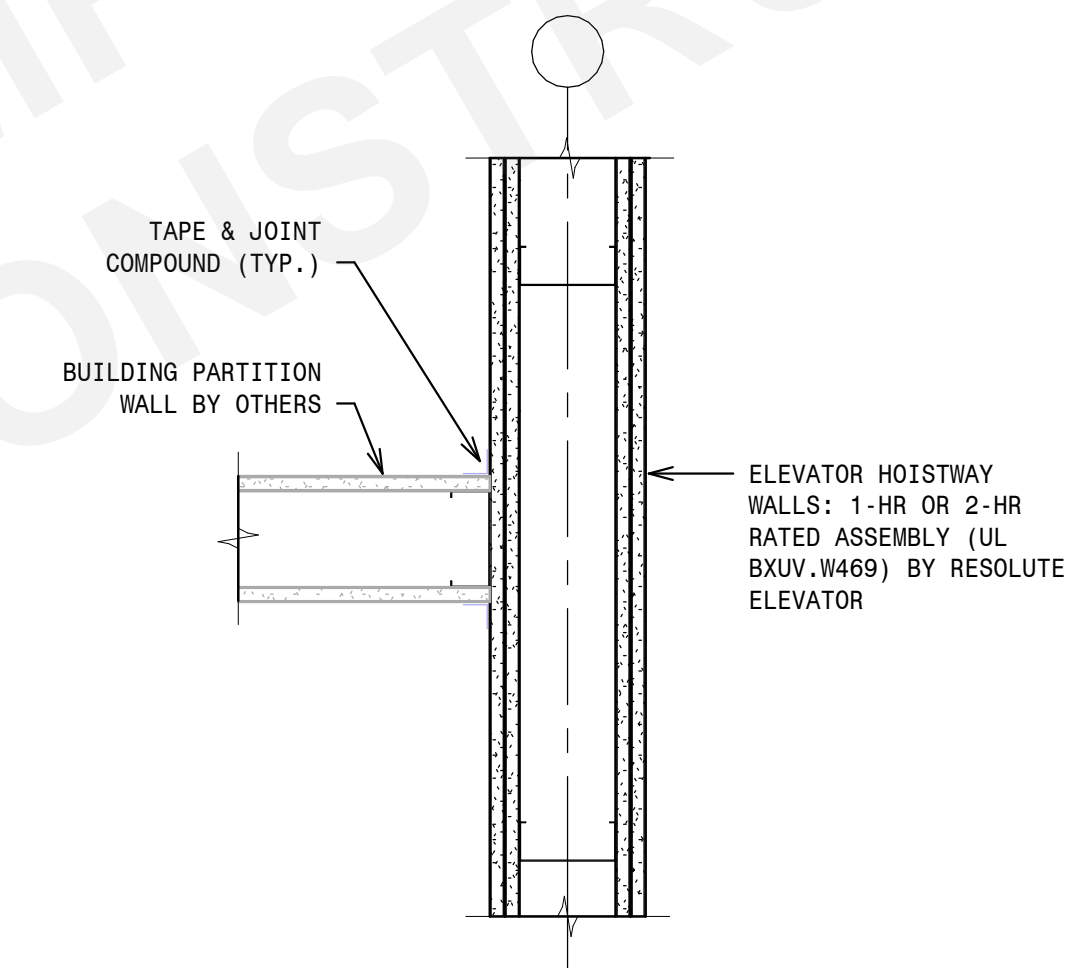
- 5 - SECTION - CEMENTITIOUS BACKER UNIT DETAIL  
1 1/2" = 1'-0"



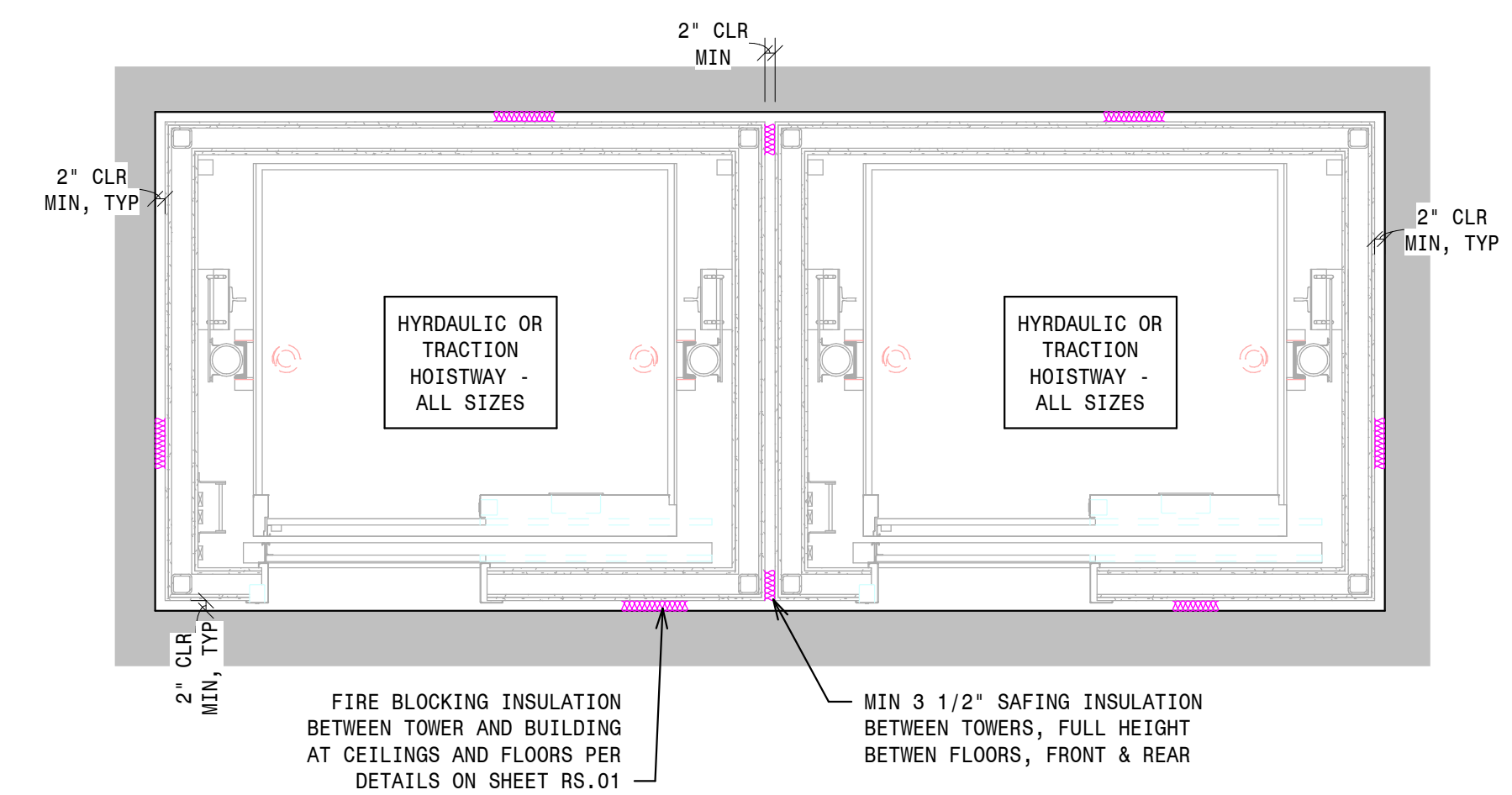
- 11 - PIPE PENETRATION THROUGH WALL  
1 1/2" = 1'-0"



- 10 - CABLE PENETRATION THROUGH WALL  
1 1/2" = 1'-0"



- 9 - INTERSECTION OF RATED PARTITIONS  
1 1/2" = 1'-0"



- 8 - TYPICAL DUPLEX SHAFT PLAN  
3/8" = 1'-0"

REVISIONS

NOT FOR CONSTRUCTION

PROJECT NO.

NLH

DES. BY:

SEAL

RESOLUTE ELEVATOR

RESOLUTE ELEVATOR



2309 AIRPARK DR.,  
 BURLINGTON, NC 27215  
 PHONE: (919) 903-0189  
 FAX: (336) 232-9789  
 Info@resoluteelevator.com  
 www.ResoluteElevator.com  
 NC Firm No. D-0476

SHEET NO.

RS.03